

# FEATURES & AMENITIES

## Lifestyle Amenities

- Located in Atlantic Station® just blocks from the Atlantic Station® Entertainment District that includes retail shops, entertainment venues and restaurants
- Internet Café on site
- Private Resident Clubroom with full-service kitchen
- Swimming pool with Sundeck
- Covered, controlled access parking
- Lushly landscaped courtyards and fountains
- Neighborhood Wellness Center and Spa (Memberships Available)
- On-site Fitness Center
- Conference Room
- Car Care Facility
- Adjacent to 7-acre Commons Park and Linear Park
- Complimentary shuttle bus provides transportation throughout Atlantic Station® and round-trip service to Arts Center MARTA station



## Residence Features

- Spacious 1, 2 and 3 bedroom units
- Exceptional quality materials and finishes
- Hardwood floors in living room, dining room, kitchen and foyer\*
- Walk-in closets
- Designer tiled baths
- Wall-to-wall designer carpeting in bedrooms
- Balconies with breathtaking views\*
- Pre-wired for telephone, satellite, TV and high-speed Internet access
- Individual programmable climate control
- Private air-conditioned storage available
- Pre-wire for home theater surround sound\*\*

### Designer Kitchens

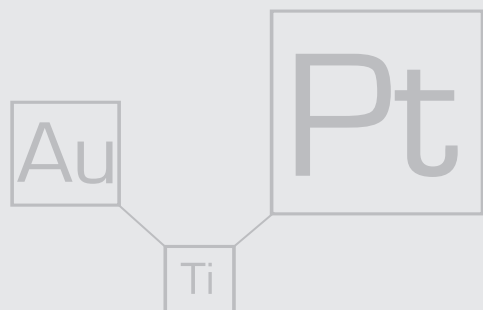
- European-style cabinetry with brushed chrome handles and tubular pulls
- Square edge granite countertops w/brushed metal backsplash
- Whirlpool® Stainless Steel appliance package including:
  - Self-cleaning range w/ cooktop
  - Dishwasher
  - Microwave
  - Stainless Steel sink w/single-lever faucet

### Baths

- Granite countertops with backsplash
- European-style cabinetry
- Mirror above vanity
- Designer tile flooring
- Soaking tubs and separate glass enclosed showers with designer tile walls\*
- Designer tile tub walls and surrounds
- Brushed chrome fixtures and accessories

\*in select units

\*\*upgrade option



element

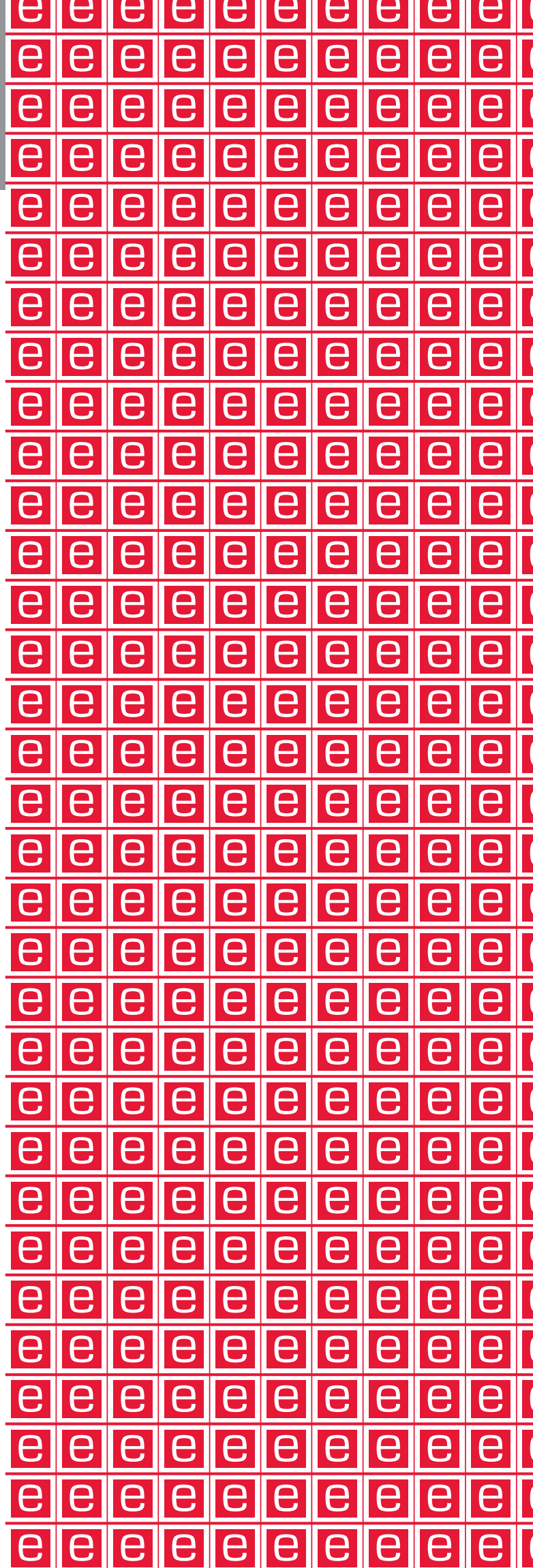


404.876.1600

www.elementatlanta.com

Au

22-0709



Are you in your

element?

GOLD-C2



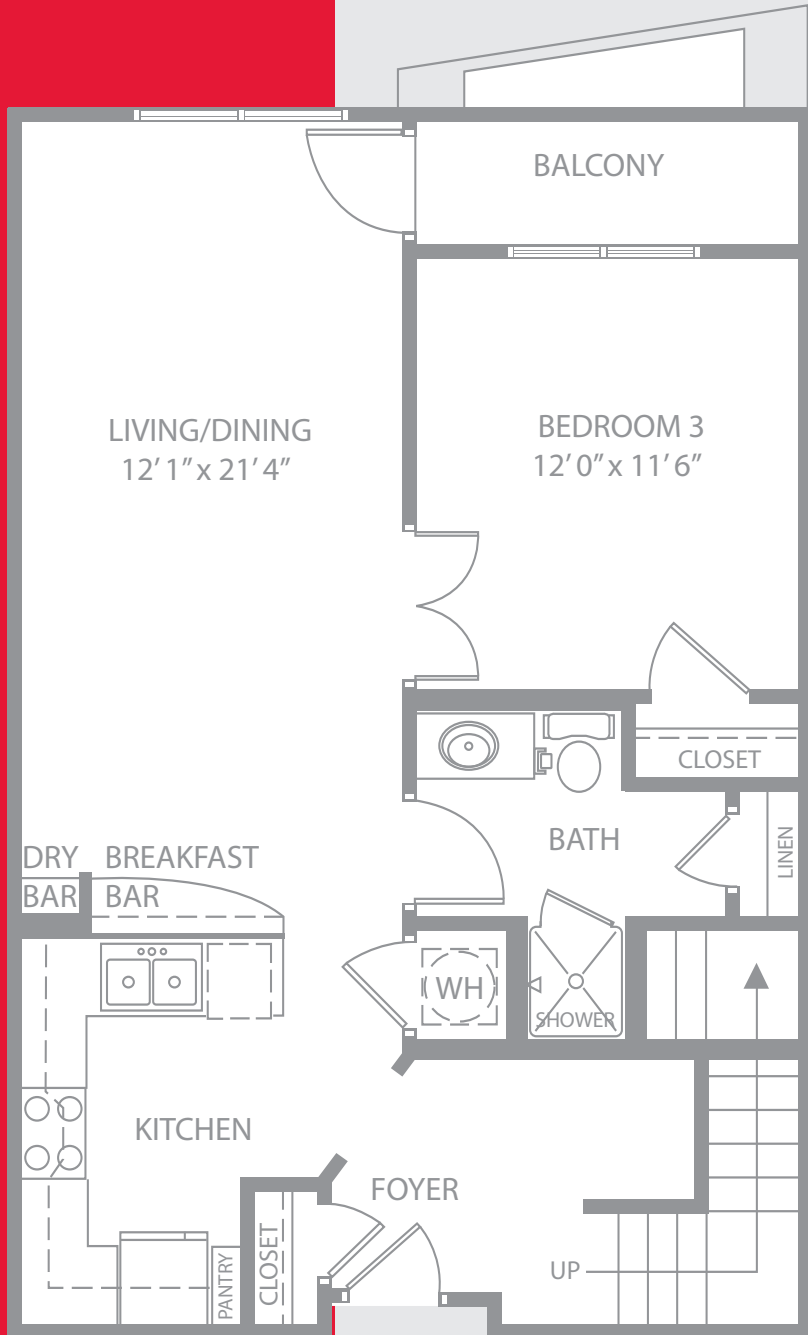
3 BEDROOM/3 BATH

Living Area: 1596 Sq.ft.

Balcony Area: 72 Sq.ft.

Total: 1668 Sq.ft.

LOWER LEVEL



UPPER LEVEL

